

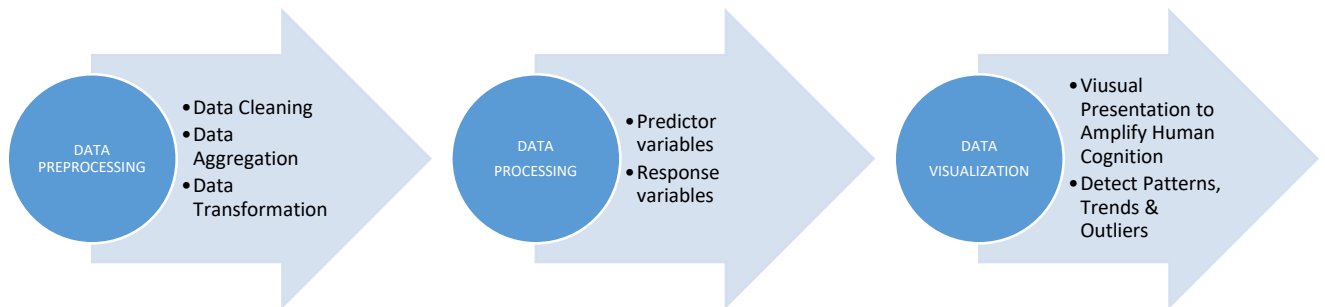
DSL810 - ASSIGNMENT #3

Experiences/Mistakes Learnt while Doing Assignment USING MATLAB

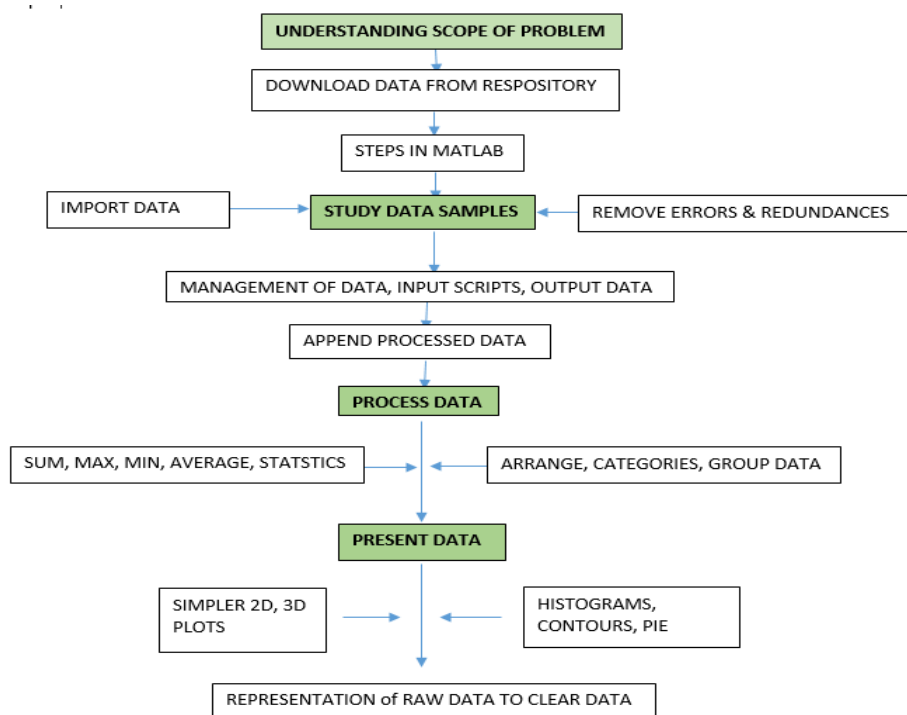
SOFTWARE USED : MATLAB

DATA : Downloaded from “https://github.com/CSSEGISandData/COVID-19/tree/master/csse_covid_19_data”

ASSIGNMENT INTEND



STEPS INVOLVED FROM RAW DATA TO FINAL PRESENTATION



- 1) Command `tic tac` is used to monitor the time taken for executing the Program.
- 2) Defining Path is Very important- My Original Data downloaded got corrupted.
- 3) Naming of files we do is very important. Since the filing size increases, we do get confused with files what we created.
- 4) Save & load `.mat` file, your workspace helps us in many ways, as my old lappy crashed while doing half of the work without saving.

- 5) In this particular project, please always use Time data as categorical, I ended up erratic plots at the end.
- 6) Using “;” and not using it and placement of “;” plays vital role in this tool. Shows execution and represents row and column on its placement position in syntax.
- 7) It is better to download processed data before further experimenting on them.
- 8) In Import option, by accident if you selected one row or column, only that row or column gets imported.
- 9) To present your code, it can be exported as .html, .docx, .pdf formats etc.,. That is very easy and less taxing. I missed up lot of time in that.

These are few mistakes I have got through. This is my first programing itself. So, may be not so important.