

MOULDING & CASTING

ASSIGNMENT 12

(DSL-732)

Introduction

Silicone molding is a simple process which involves a mixture of silicone which is poured, hardened and creates a mould and that mould is used for casting later on. This part can be encapsulated with molding material and then many parts can be made from the resulting negative. This master can be encapsulated by supporting it on spacers and enclosing it in a retaining frame.

Before starting the process of making a silicone rubber mold, we must first gather all the required tools, materials, and safety equipment. It is important to have everything ready and handy, since the working life of polymers, i.e. the time they can flow, is not very long.

Silicon Moulding

These are the following materials required for creating silicone moulds for casting:-



The Process

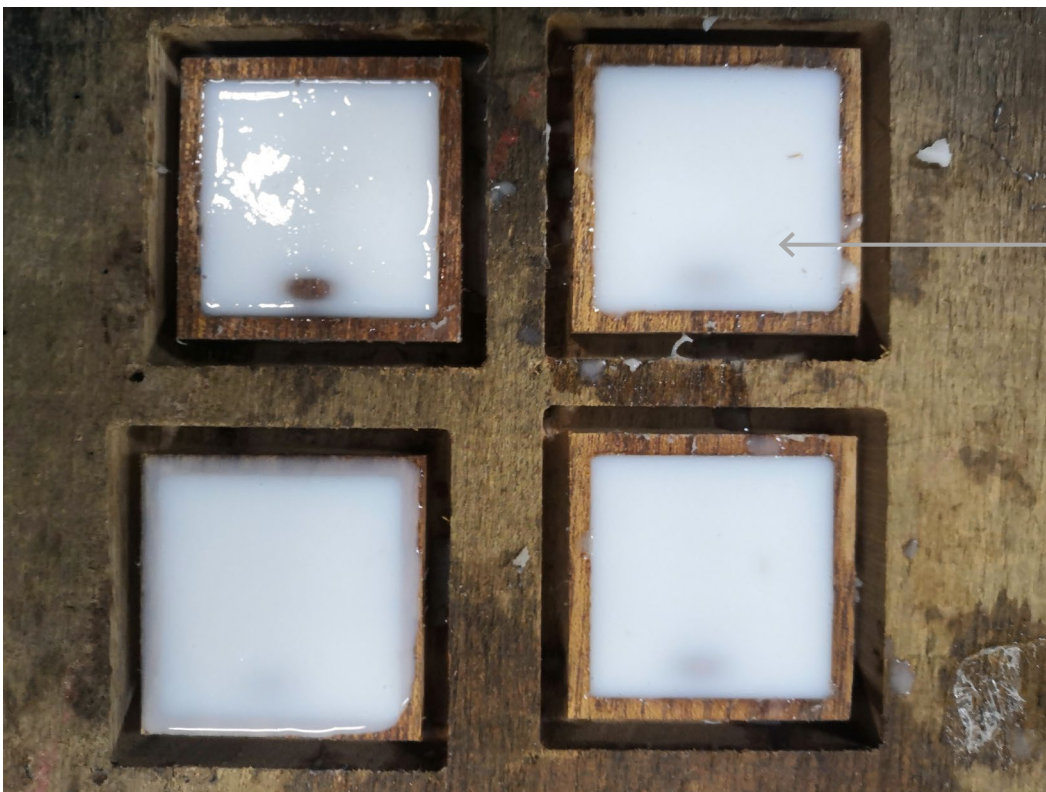
Step 1 : Making the mixture

To form the pouring mixture for the silicone we first mix the silicone and the add hardener about 10ml with syringe and then mix them using a spatula until its gives off some heat.

The volume of the silicone to be used is measured with approximate volume of the total moulds and calculating accordingly.

Step 2 : Pouring the mixture into the moulds

Step 3 : Tapping the wooden negative mould and leaving it to set for 24hrs.



← silicone
mixture
poured in the
mould



← removing the mould from the cast



← extracted silicone mould ready for casting

Casting through Silicon Mould

The Process

Step 1 : Making the mixture

To form the pouring mixture we first mix the resin and the hardener in the ratio of 2:1 and then mix them using a spatula until its gives off some heat and also mixing glitter if desired .

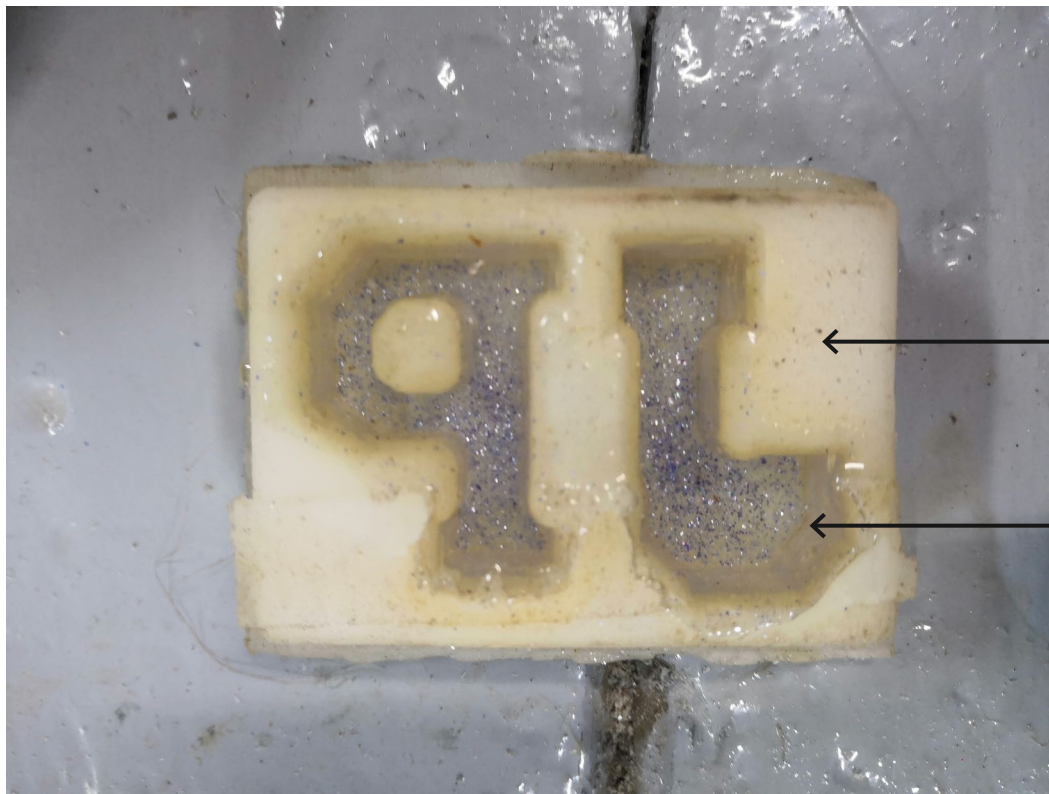
Step 2 : Preparing the various silicone moulds mentioned above.

Step 3 : Using cling film wrap and joining the silicone moulds for pouring the mixture which is to be casted.

Step 4 : Pouring the prepared mixture into the prepared silicone moulds and tapping for perfect settling and keeping in mind to fill the mixture a little more so that it doesnot form a concave profile at the base after solidifying.

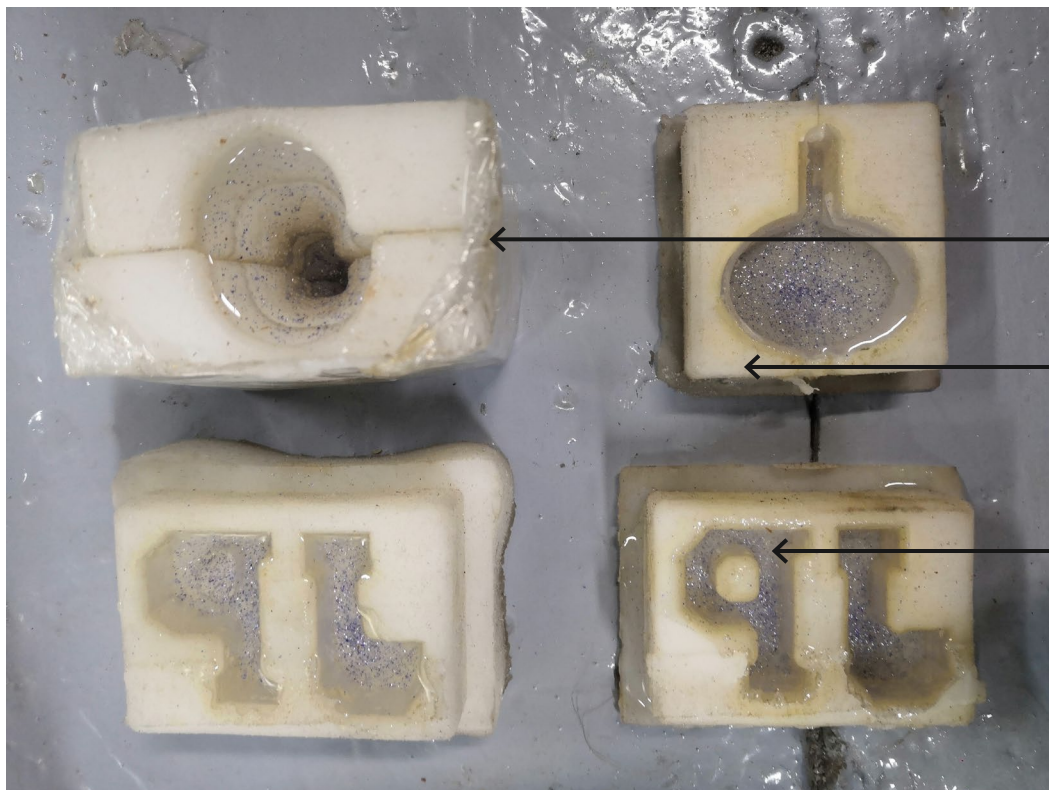


Pouring the mixture into various moulds



← silicone
mould

← casting
mixture

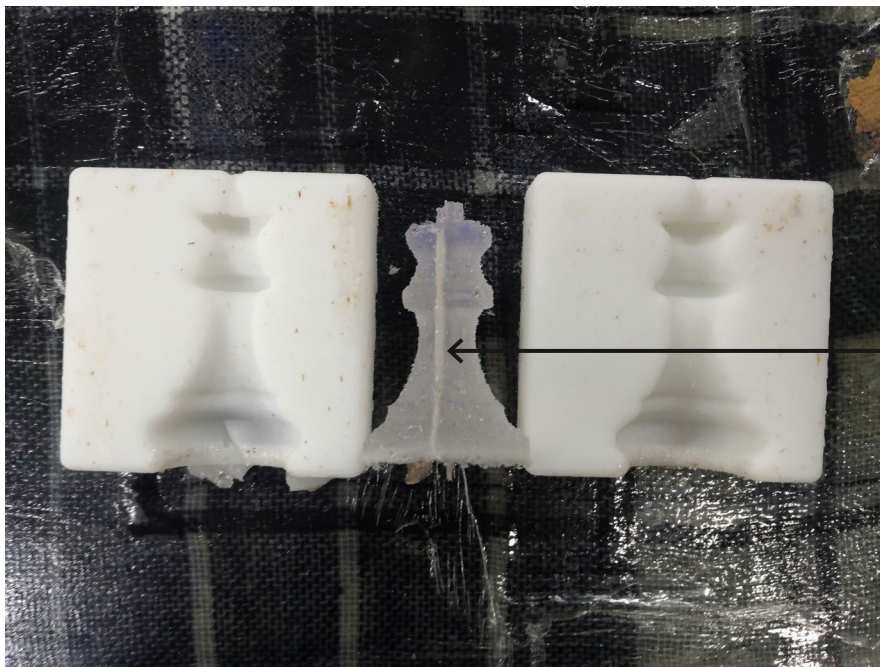
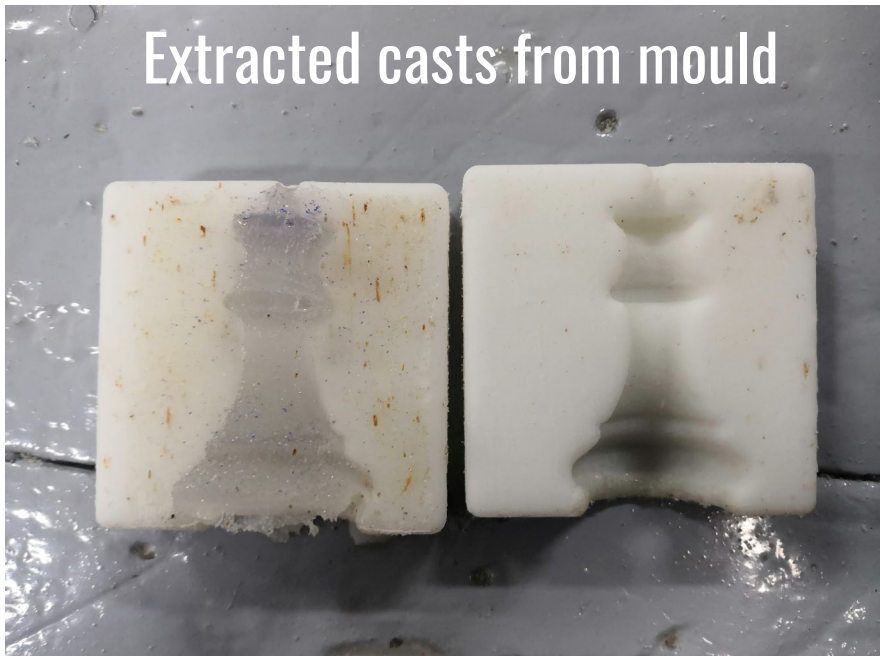


← cling filmt

← silicone
mould

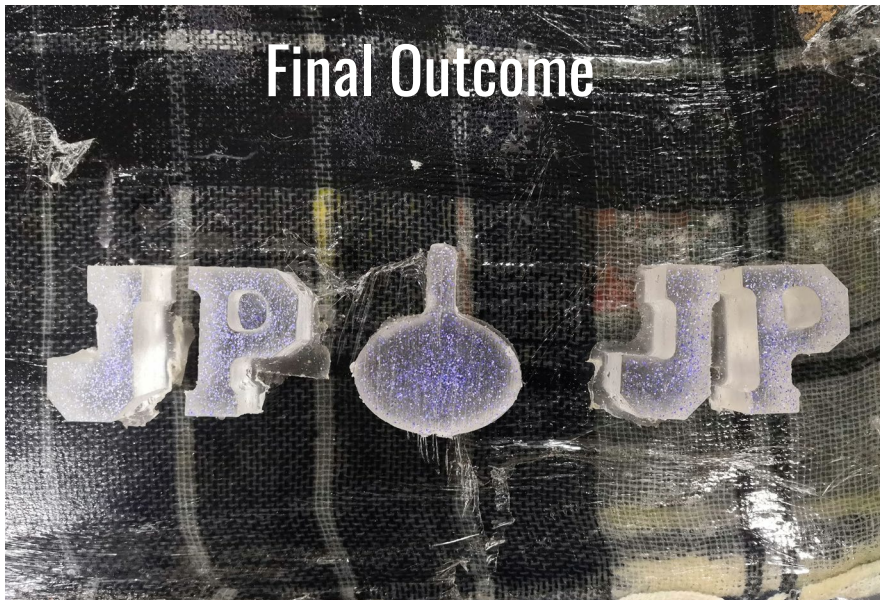
← casting
mixture

Extracted casts from mould



the final product after casting

Final Outcome



THANKYOU