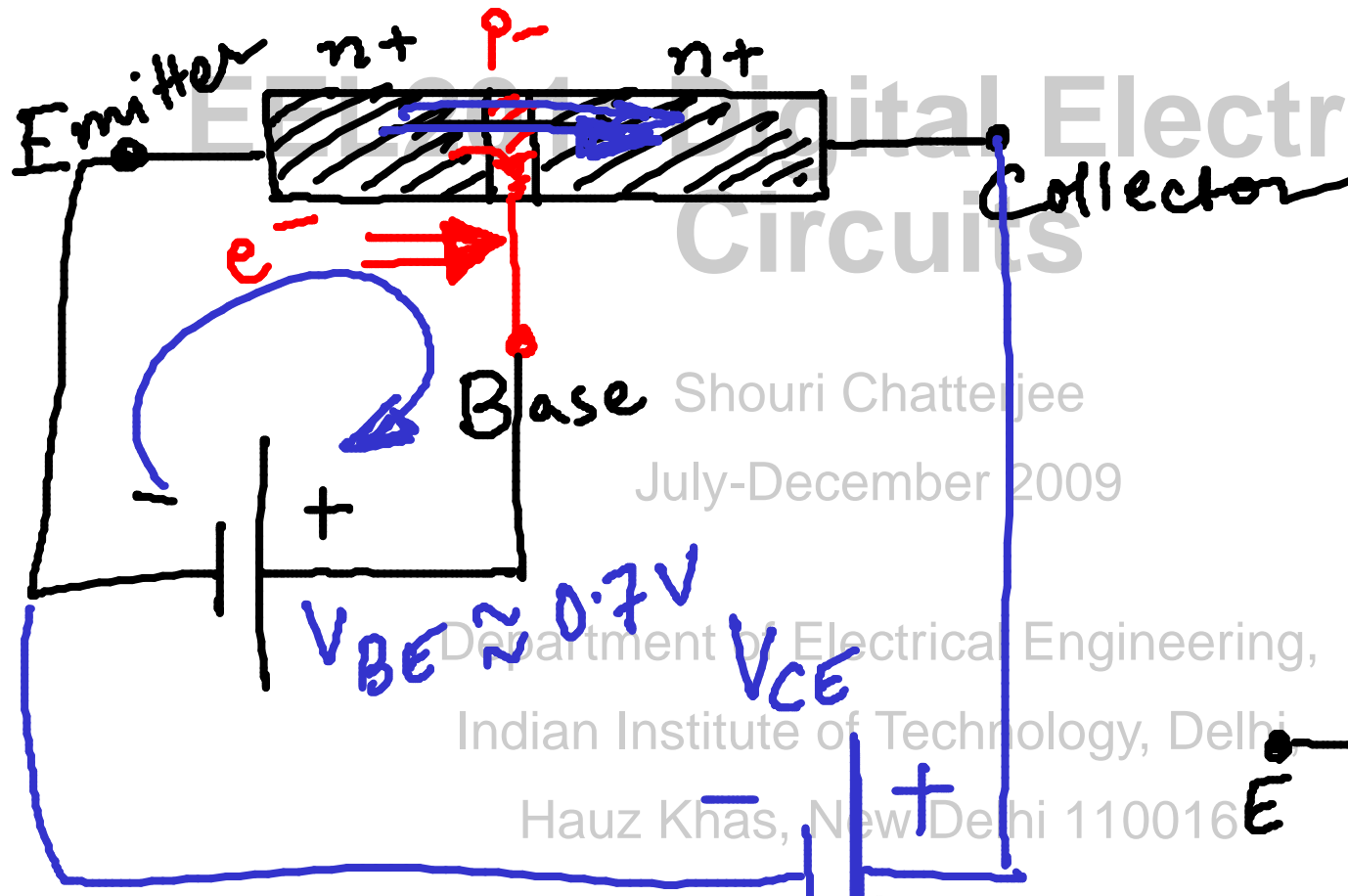


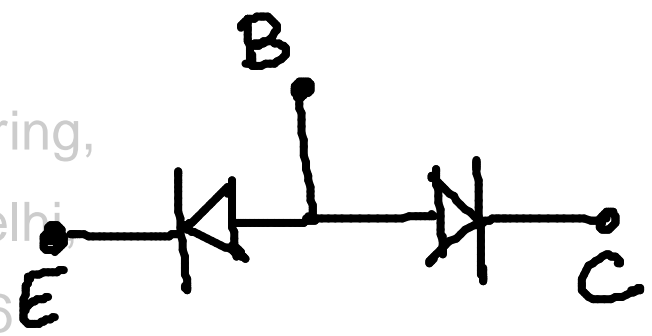
Bipolar junction transistor

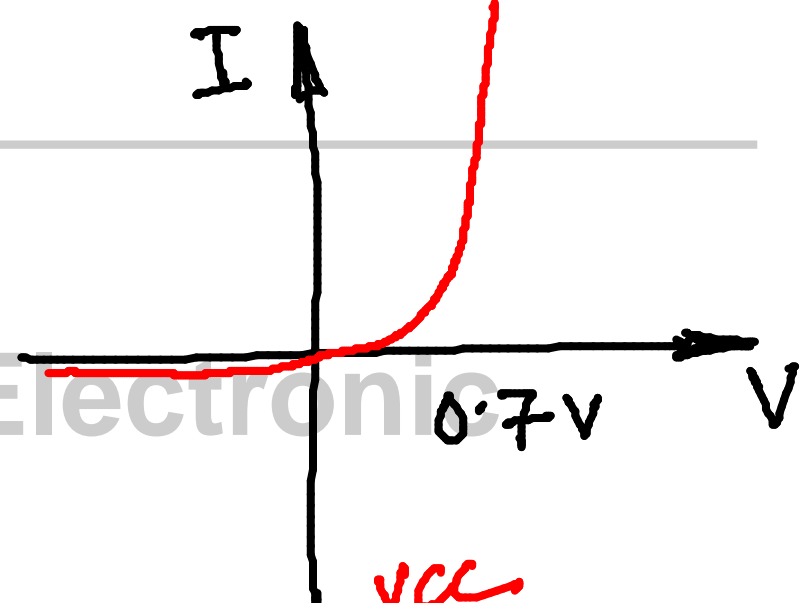
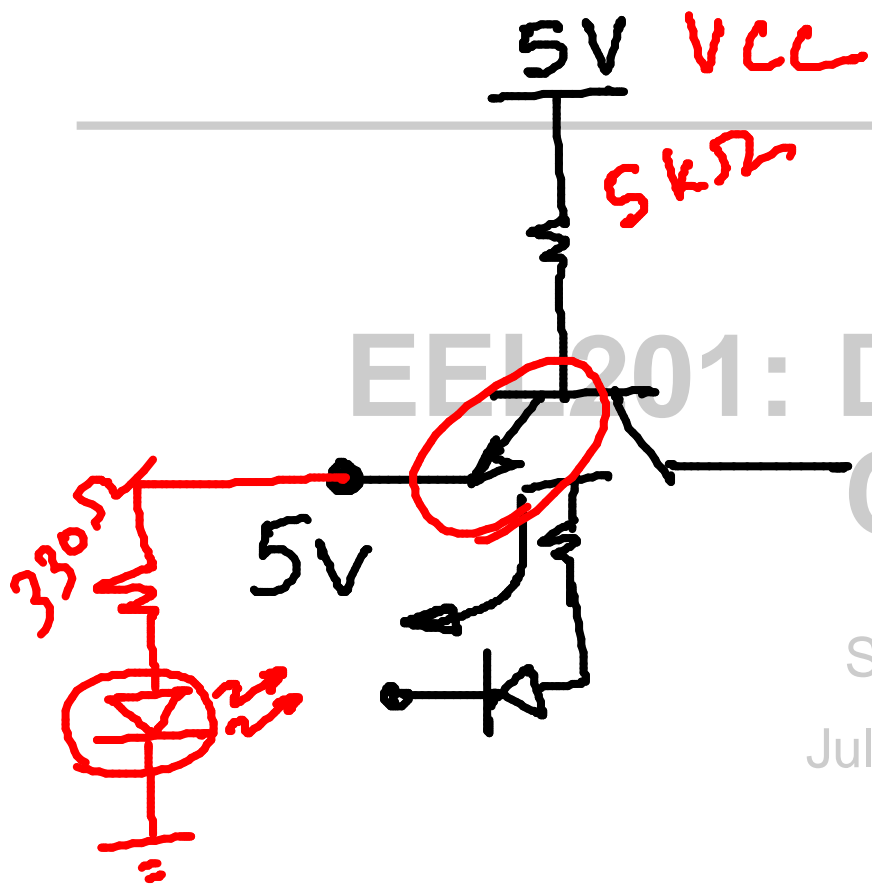


$V_{BE} \approx 0.7V$

V_{CE}

$V_{CE} > V_{BE}$

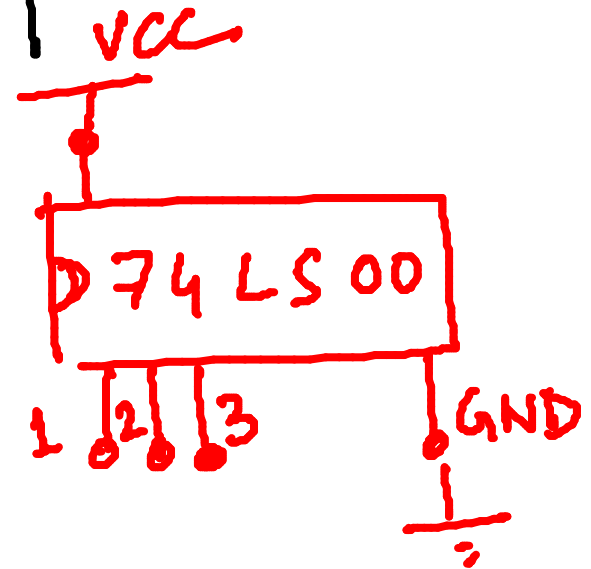


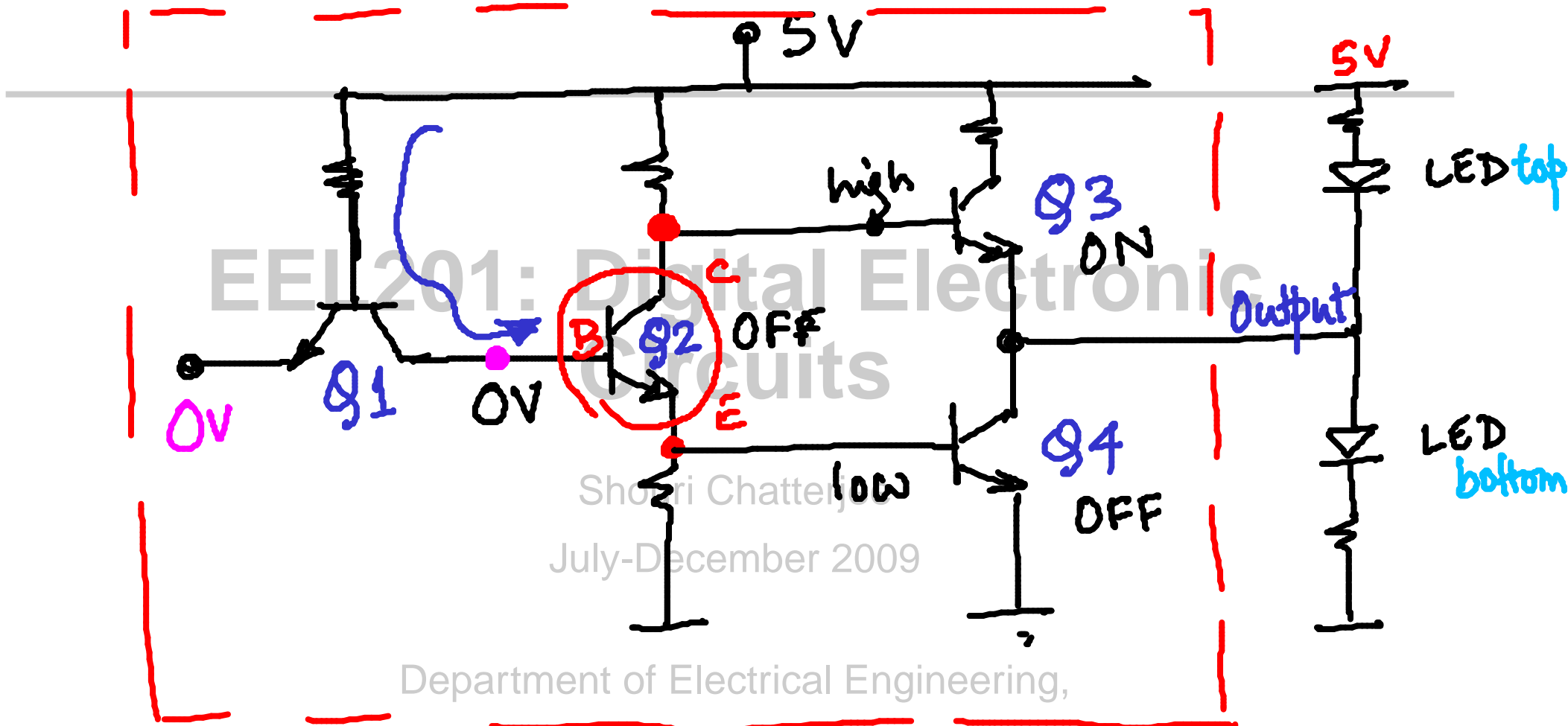


EEL 201: Digital Electronic Circuits

Shouri Chatterjee
July-December 2009

Department of Electrical Engineering,
Indian Institute of Technology, Delhi,
Hauz Khas, New Delhi 110016





Input open \longrightarrow same as input 5V
 5V \longrightarrow output = 0V
 0V \longrightarrow output = 5V

