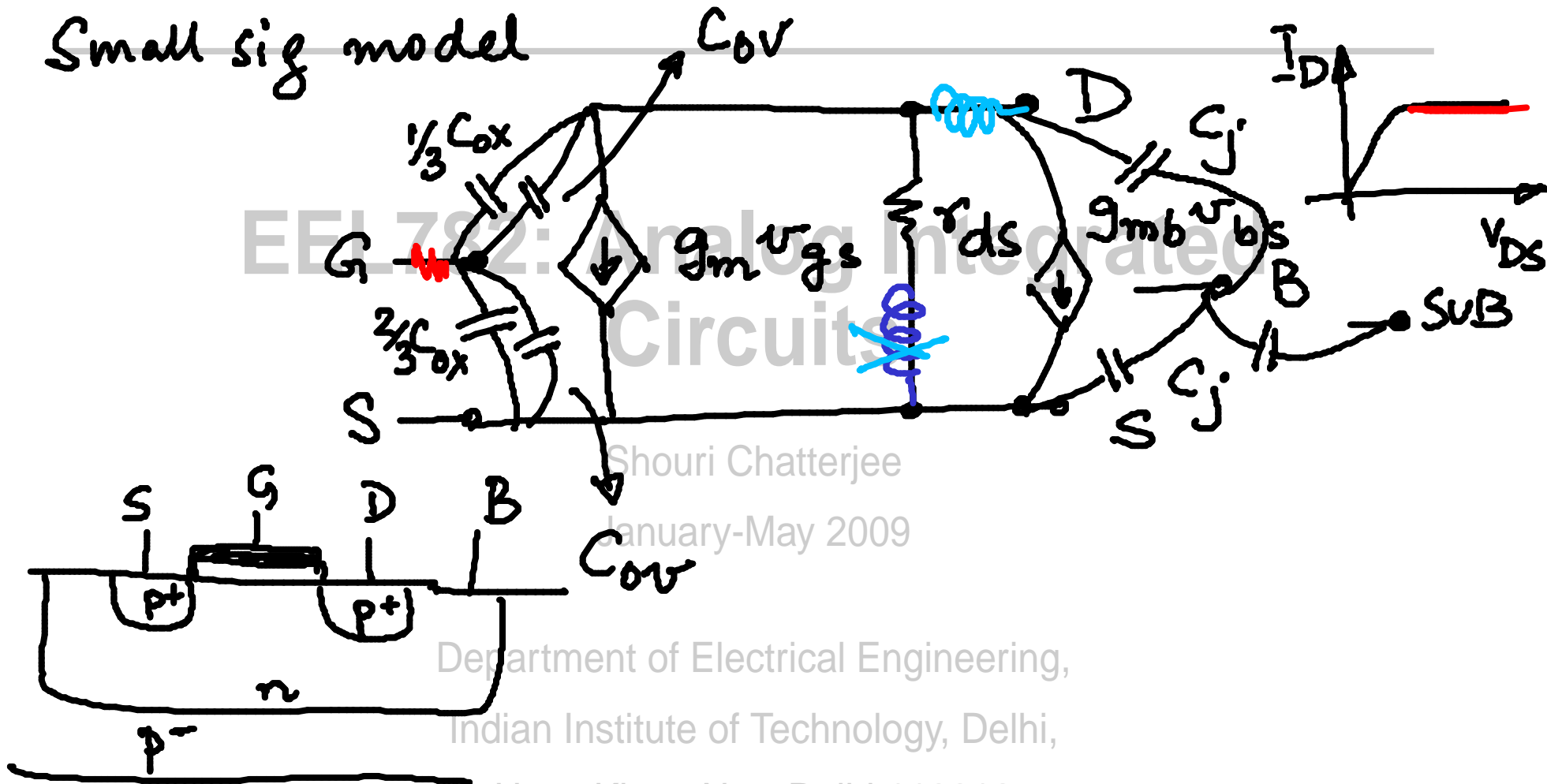


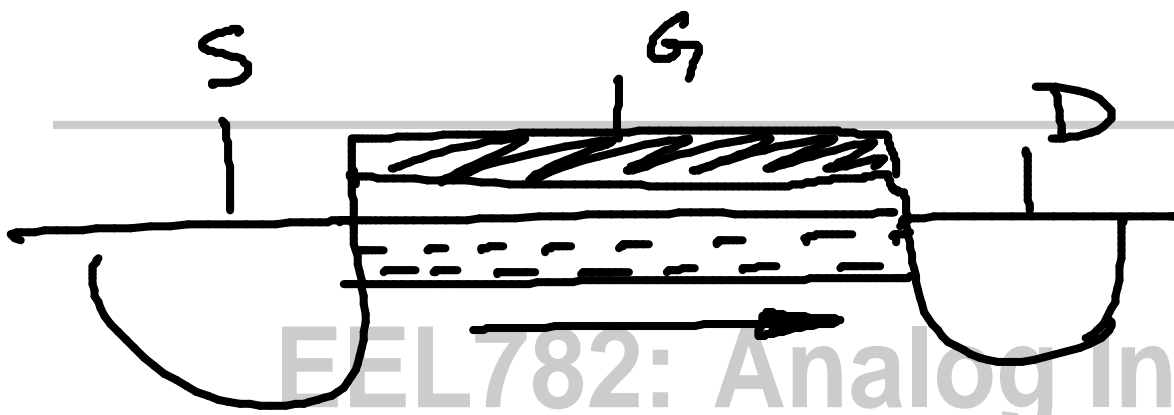
Small sig model



Shouri Chatterjee
January-May 2009

Department of Electrical Engineering,
Indian Institute of Technology, Delhi,
Hauz Khas, New Delhi 110016



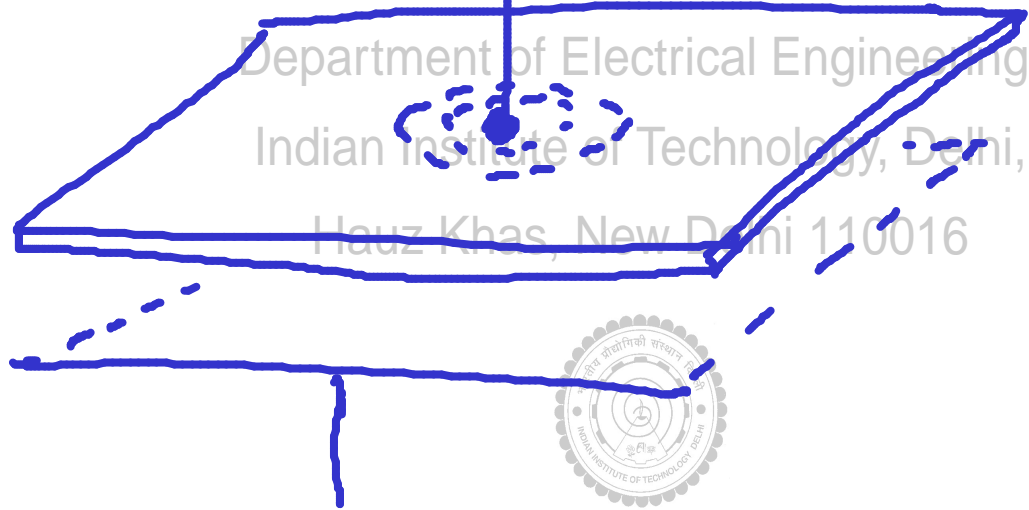


EEL782: Analog Integrated Circuits

Shouri Chatterjee
January-May 2009

metal wire

$V_1 \rightarrow V_2$

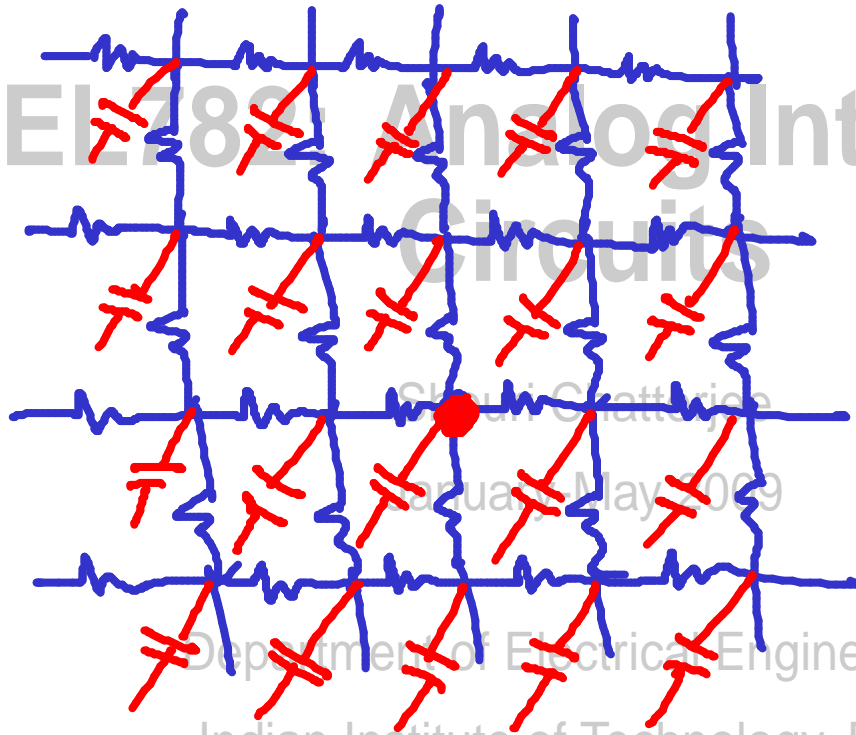


Department of Electrical Engineering,
Indian Institute of Technology, Delhi,
Hauz Khas, New Delhi 110016



EEL789 Analog Integrated Circuits

C_{ox}
 ρ
 W, L

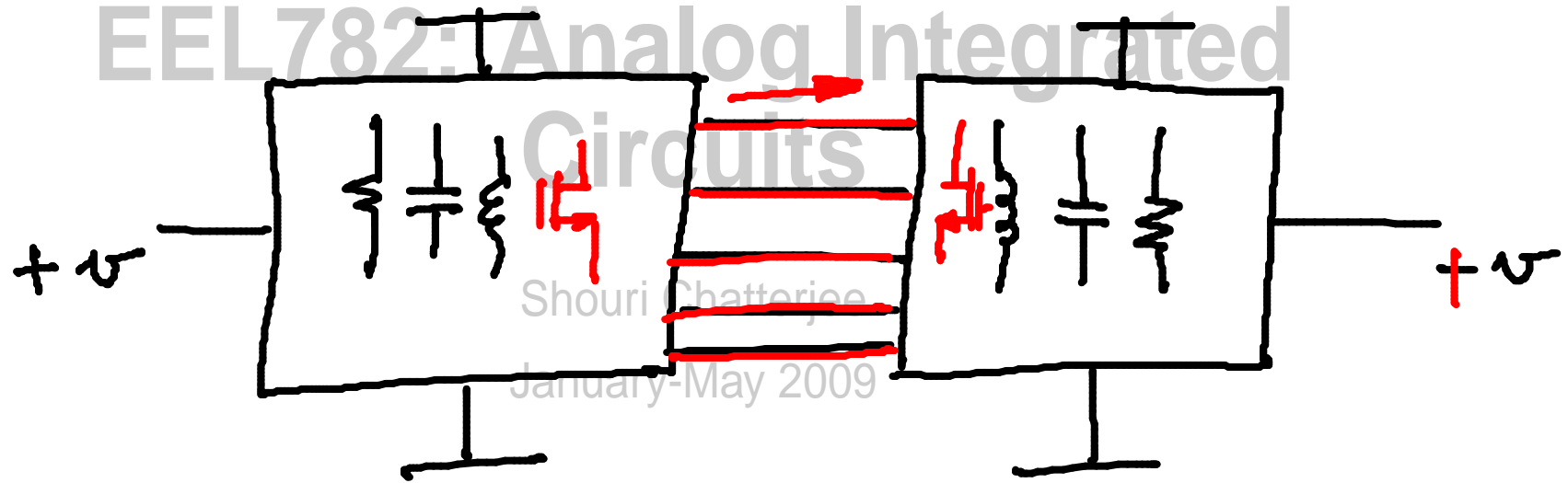


Department of Electrical Engineering,
Indian Institute of Technology, Delhi,
Hauz Khas, New Delhi 110016



1. MOSFET

2. Small sig models



$+v, -v$



$0 V$ in between

$+v, +v$



$0 A$ in between

